

Metal Finishes

The following metal finishes are available on our solid brass castors, hinges on our knole models, and metal finishers on certain leg styles. See individual product specifications for available finishes specific to each model:



ANTIQUÉ BRASS

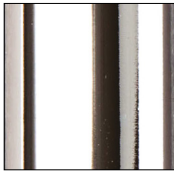


BRASS



NICKEL

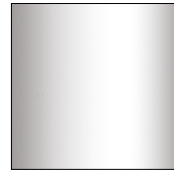
The following metal finishes are available on our steel legs, steel castors and plinths. See individual product specifications for available finishes specific to each model:



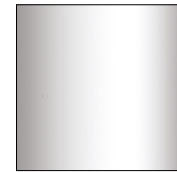
**POLISHED
STAINLESS STEEL**



**POLISHED
CHROME**



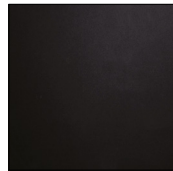
**SATIN
STAINLESS STEEL**



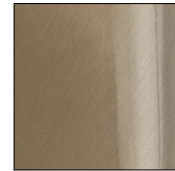
SATIN NICKEL



STEEL



**POWDER COATED
BLACK**



BRUSHED BRASS